

POLICE.UK

WEBSITE ANALYSIS

Every month for the last two years **POLICE.UK** has shown a range of crimes and anti social behaviour that have been reported to the police. From **May 2012** **POLICE.UK** has shown what happened after a crime i.e. Police action or justice outcome.

Site statistics

548 million HITS since launch daily average* **365,876 HITS**

53.5 million VISITS since launch daily average* **17,439 VISITS**

*Daily average figures for January 2013

Crime type breakdown

Data from **POLICE.UK** December 2011 - November 2012

6,168,304
Total crimes shown



Crime locations

The vast majority of crimes shown on the site are on or near specific streets, but since January 2012 the site has shown where crimes have been recorded at **places of interest like shopping centres, nightclubs or parks.**

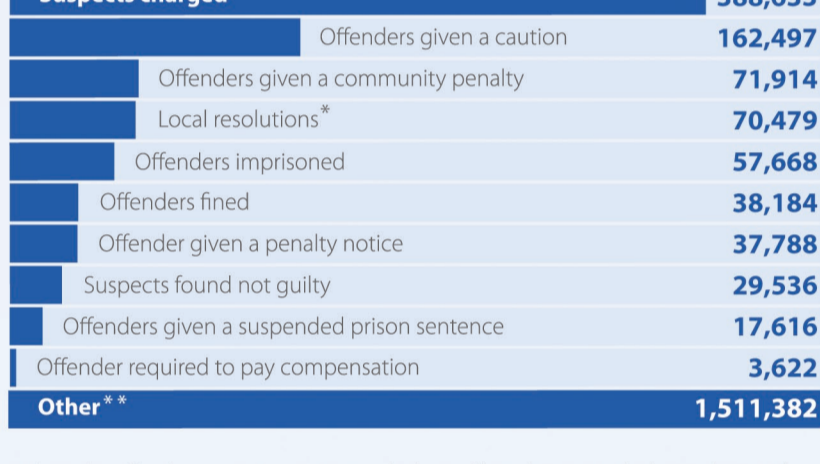


* Other 'points of interest' such as bus stations, airports, hospitals, theme parks and theatres

Police action and justice outcomes

Since May 2012, **POLICE.UK** has shown what happens after a crime - what action the police took and, where applicable, what the court outcome was.

2,389,319
Crime 'outcomes' displayed on **POLICE.UK**



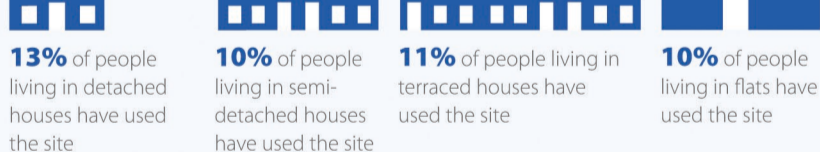
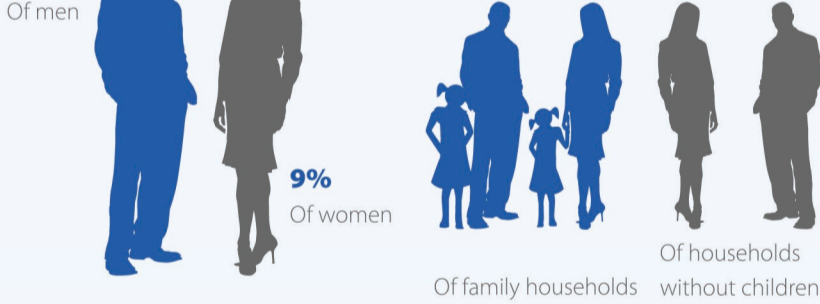
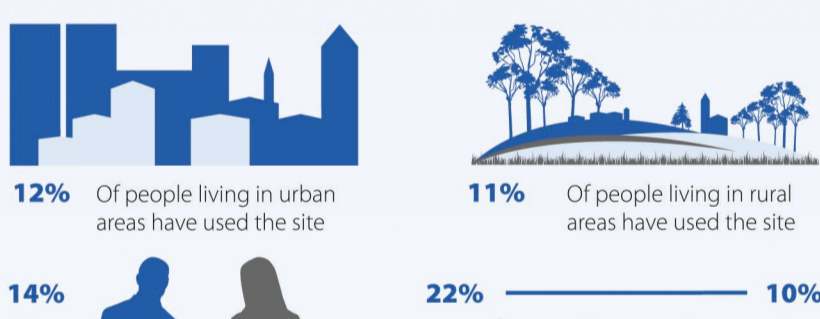
*Where the offender was put in contact with those affected to repair the harm done and find a positive way forward

**This includes the following outcomes; court case unable to proceed, no further action at this time, offender sentences as part of the another case, suspect sent to crown court, unable to prosecute suspect.

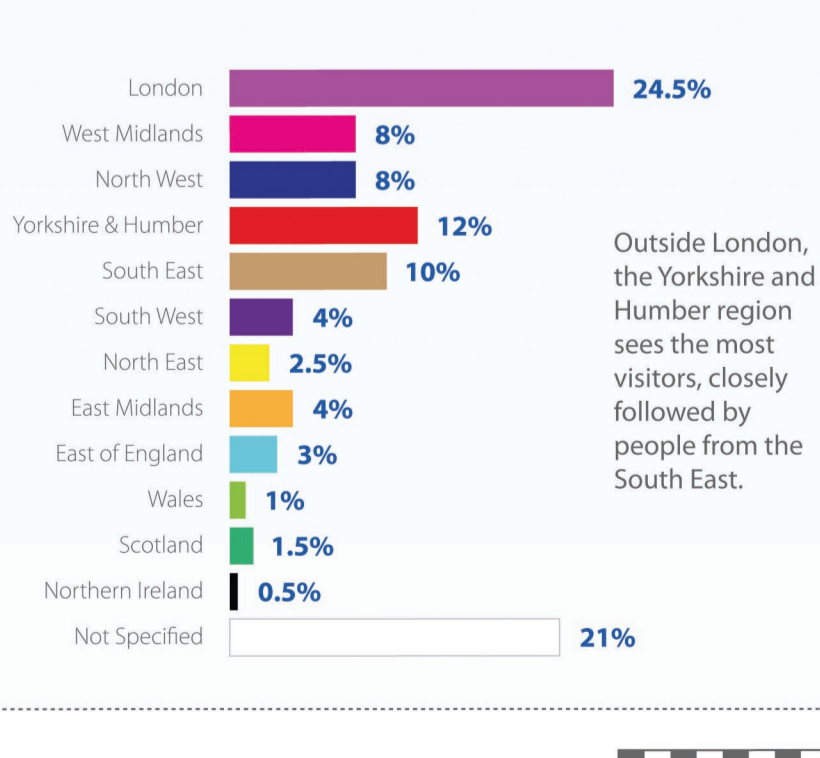
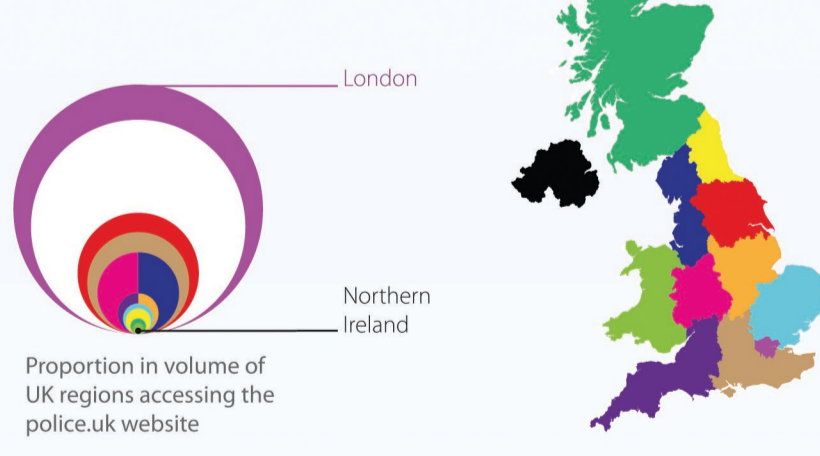
What do we know about the people behind the 53.5 million visits to POLICE.UK?

Source: ONS, Crime Survey for England and Wales 2011/12

Who uses the site?



UK Visitors - by region



Using POLICE.UK to interact with the police

The site has information on **32,433** Neighbourhood Policing Officers, so it is a great way to interact with the police – in fact there have been **887,000** views of the 'Meet the team' pages over the last two years.

Sources and information

Source: ONS, Crime Survey for England and Wales 2011/12, POLICE.UK data for Dec 2011 - Nov 2012